



www.polyfasad.lv

POLYFASAD, SIA

VAT Nr. LV40103693926

Legal Address: Jukuma Vācieša iela 10-25, Rīga, Latvija, LV-1021

mob.ph.: +371 28705139, e-mail: info@polyfasad.lv

Decorative Heat Insulating Board Installation

- 1.** Mark the horizontal line with the help of water or laser levelers.

Down this line fix a start profile section to the wall with screw plugs – put it strictly horizontally. As a start profile you can use a straight beam, non-circular tube etc.

Begin fixing DHIB (Decorative Heat Insulating Board) from the start profile.

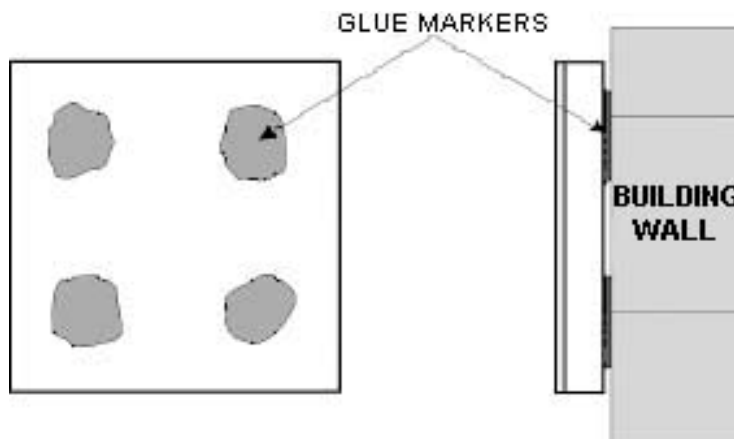


- 2.** Put the first row of DHIB on the start profile section. If the walls are not rendered or lopsided – then DHIB should be laid by levels - vertical, horizontal, diagonal. DHIB are fixed at glue markers.

Glue markers should be applied on the reverse side of a board – where there are temporary openings for screw plugs. If the walls are even and rendered, then fix them in a usual tile combing way.

DHIB can be installed by using ANY kind of ADHESIVE for polystyrene or stone wool – DO

NOT CONFUSE WITH CLAY TILE ADHESIVE which is not suitable in this case.





www.polyfasad.lv

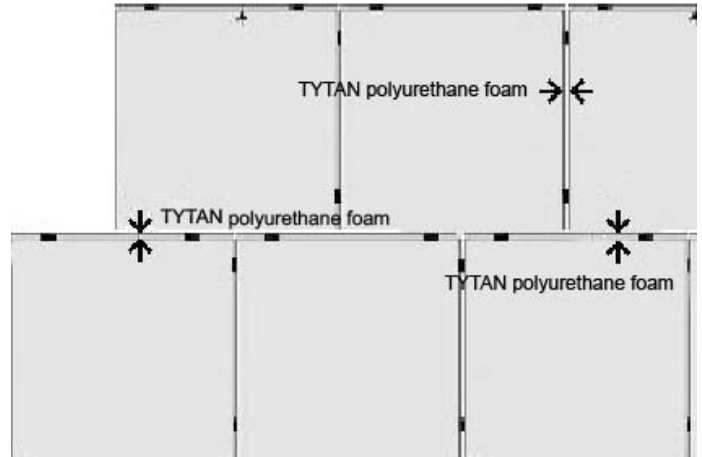
POLYFASAD, SIA

VAT Nr. LV40103693926

Legal Address: Jukuma Vācieša iela 10-25, Rīga, Latvija, LV-1021

mob.ph.: +371 28705139, e-mail: info@polyfasad.lv

3. While installing DHIB put them close to each other and trim afterwards if necessary. To achieve better connection stone wool or foam polystyrene adhesive (for example TYTAN polyurethane foam) should be applied on the side joining surface



DHIB are to be installed according to the brick laying scheme or check boarding to conceal butt joints while smoothing. So finally it would look like regular facing bricks.



4. DHIB can be cut with angle grinder with concrete disc whereas extended insulating layer can be trimmed by knife or hand saw.



www.polyfasad.lv

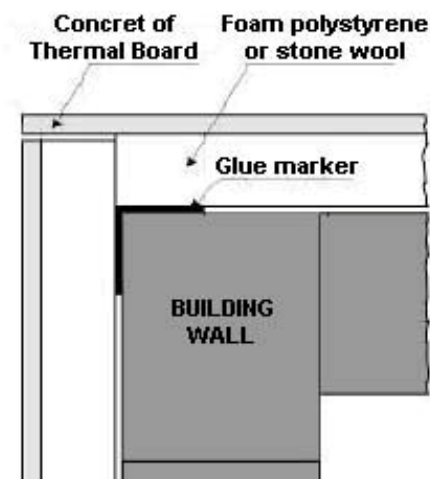
POLYFASAD, SIA

VAT Nr. LV40103693926

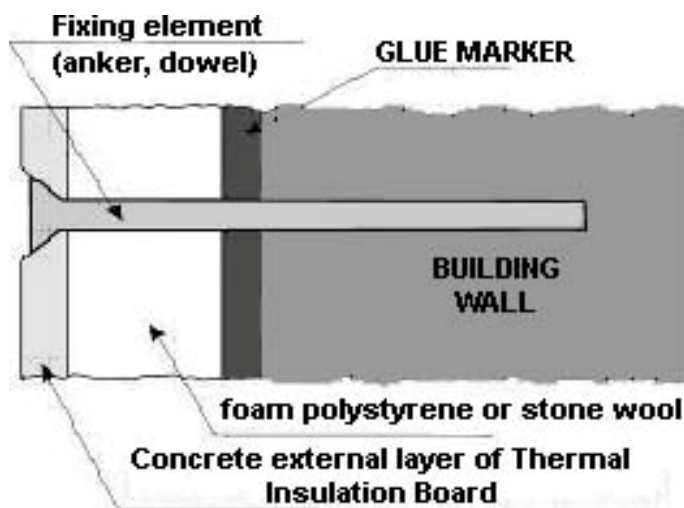
Legal Address: Jukuma Vācieša iela 10-25, Rīga, Latvija, LV-1021

mob.ph.: +371 28705139, e-mail: info@polyfasad.lv

5. Corner dressing. To make the corner of the building you need to cut the DHIB joint points **at an angle of 45° or cut the stone wool or polystyrene foam layer of one of the joining boards on the width of the other one (90°).**



6. Screw plugs are installed only after the adhesive hardened!!! In temporary openings for screw plugs on the concrete layer – screw holes for dowels. Then position screw plugs. Once the board has been fixed with screw plugs – close the openings with front putty.





www.polyfasad.lv

POLYFASAD, SIA

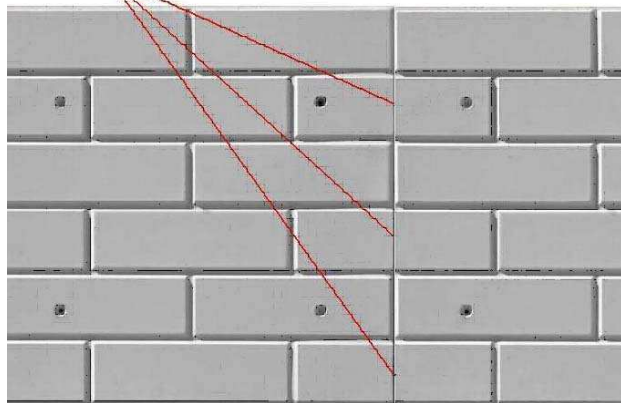
VAT Nr. LV40103693926

Legal Address: Jukuma Vācieša iela 10-25, Rīga, Latvija, LV-1021

mob.ph.: +371 28705139, e-mail: info@polyfasad.lv

- 7.** Joints between the DHIB should be covered up with front paintable joint fillers (sealant). We recommend using joint filler “TENAPLASTS”, which you can purchase at our Company on discount price. The sealant should be applied on the entire outer surface of DHIB decorative joints. Take into account the natural sealant shrinkage and apply thicker layer. Wash the joints immediately with water, and wipe excess water or drops with a cloth, because after drying joint filler becomes hard as rubber and, actually, cannot be removed.

Joints should be ground with putty over the brick top, so visually it would be a whole brick and look like a true facing brick.



- 8.** Once joint filler has dried – paint the entire surface of the wall with regular acrylic facade paint. To achieve even and fine surface we recommend, to do prime coating.



- 9.** Approximate consumption of materials per 1m² for winterising facade with DHIB “POLYFASAD”:



www.polyfasad.lv

POLYFASAD, SIA

VAT Nr. LV40103693926

Legal Address: Jukuma Vācieša iela 10-25, Rīga, Latvija, LV-1021

mob.ph.: +371 28705139, e-mail: info@polyfasad.lv

1. Polystyrene or stone wool adhesive— from 5kg (consumption depends on the wall lopsidedness).
2. Sealant 200-250 gr.
3. Start putty for external works – approx. 100 g/m² (for smoothing screw plug fastening points)
4. Paint – 150 g /one coat.
5. Screw plugs for quick installation 16 pc/ m² (the screw plug length varies depending on the wall lopsidedness).

www.polyfasad.lv

info@polyfasad.lv

sales@polyfasad.lv